



# Taduff Solar Park

Athlone Municipal District Meeting

26 March 2026





# About us



James McDermott  
Project Manager



David Clancy  
External Affairs Manager

# We

are  
At EDF power solutions Ireland we're **committed to tackling climate change**. Our team of 35 talented people, supported by more than 600 colleagues in the UK, share an ambition to **create a net zero future where clean, green energy powers all of our lives**.

It's a huge ambition and time is of the essence if we are to play our full part in meeting Ireland's challenging renewable energy targets.

With our **unique mix of technologies**, including onshore and offshore wind, solar PV and battery storage, we are the UK's and Ireland's most diverse generator of renewable energy.



# We

To achieve our goal of **generating over 1GW of renewable energy by 2035**, we're working with stakeholders and communities throughout Ireland to unlock the enormous potential of the low carbon energy sector.

As part of one of the world's largest low carbon electricity companies, we know we can do it. We're not only supporting the Ireland's energy security, we're creating exciting career opportunities, transforming the way we power our lives and supporting the aspirations of people living in communities close to our projects.

In 2023 we energised three of Ireland's first grid-scale solar farms and have announced plans for a further two solar farms, six onshore wind farms, and two battery storage projects across Ireland. In total we have an Irish onshore development pipeline of almost 1GW.

In 2020 we acquired 50% of Codling Wind Park, a major

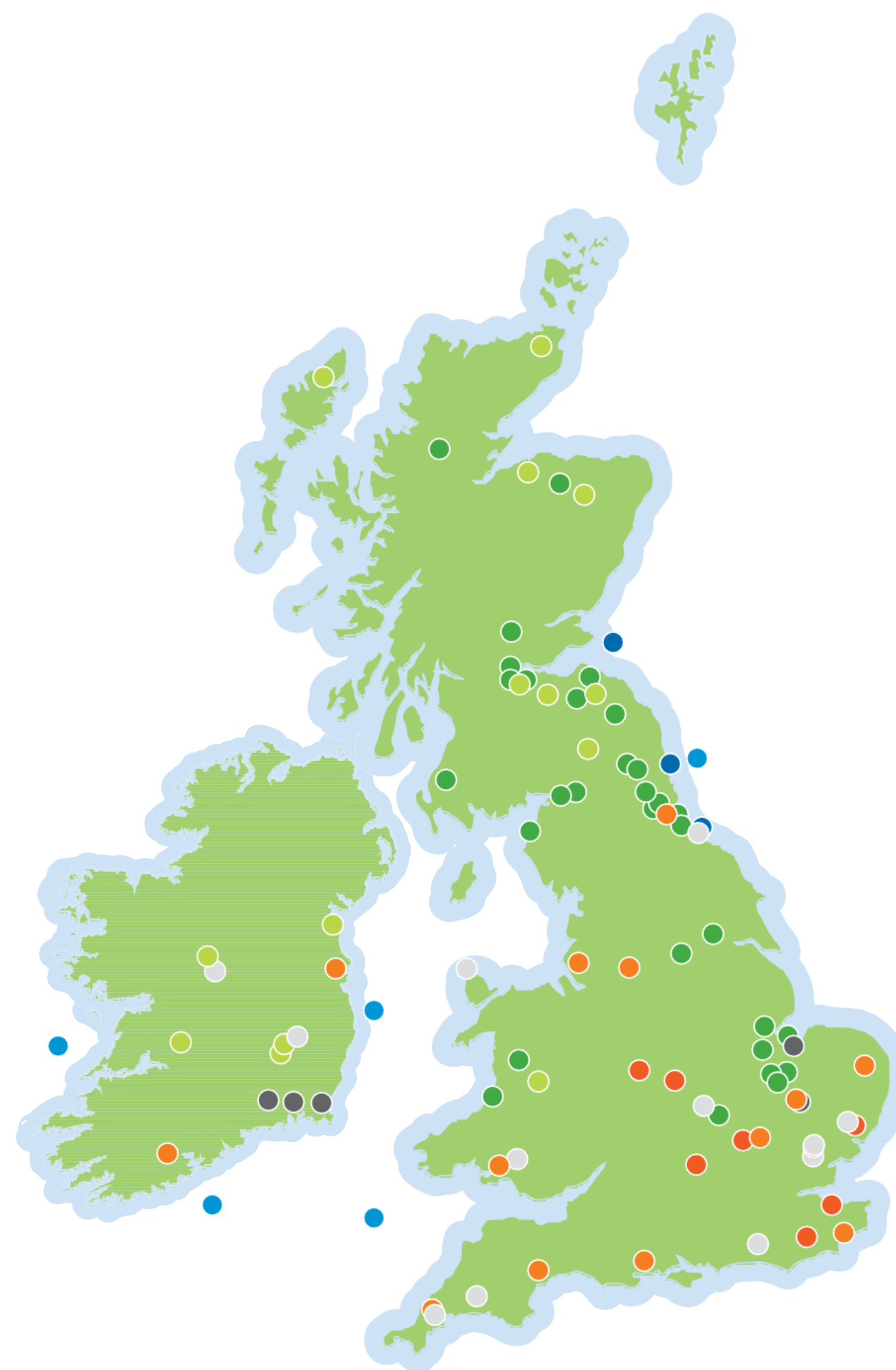


EDF power solutions UK and Ireland has developed a diverse portfolio of operational and future assets



**2GW operational**  
**14GW pipeline**

- Offshore wind – In development
- Offshore wind - Operational, under construction or post-FID
- FID Onshore wind – In development
- Onshore wind - Operational, under construction or post-FID
- FID Battery storage – In development
- Battery storage - Operational, under construction or post-FID
- Solar PV – In development
- Solar PV - Operational, under construction or post-FID





# Taduff Solar Park

Located 6km southwest of Athlone



Acquired by EDF  
power solutions UK  
and Ireland

**late 2020**



Capacity

**c.80MW**



Across

**130 hectares**



Construction  
commencing

**Q1 2026**



Expected energisation

**Spring 2028**

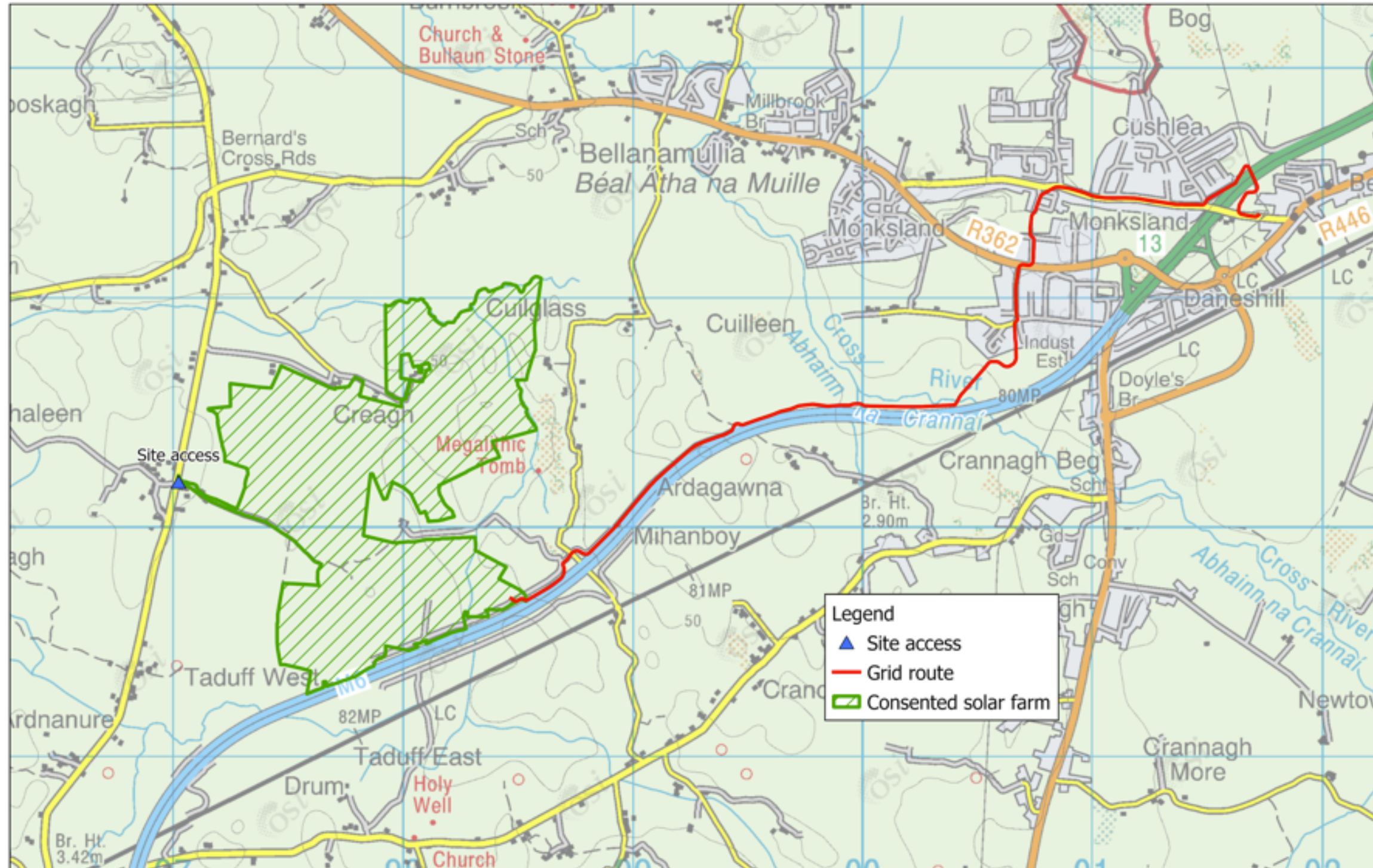
- Initial 70 hectares project was **expanded to 130 hectares.**
- Recently granted **planning permission for a battery energy storage system** as part of the project to maximise the site's potential.
- As part of our long-term commitment to the local area a **Community Benefit Fund will be established to go towards supporting positive local initiatives and activities.**

## Construction and Environmental Management Plan

A Construction and Environmental Management Plan will be adopted to ensure that the construction of the project considers environmental protection measures. Existing trees and hedgerows in and around the site will be retained where possible, and mitigation screen

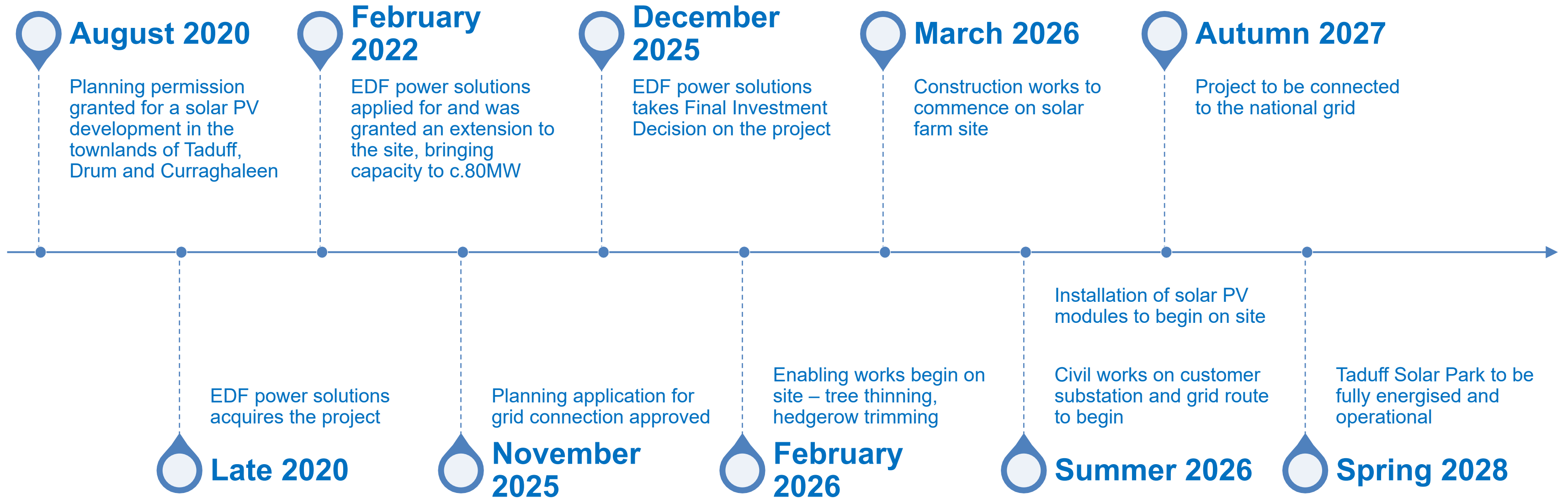


# Site map





# Project timeline





# Community engagement

- March 2023 – Reintroduced project to local community. Established dedicated webpage and contact details for the project
- Winter 2025 – Further updates shared with residents regarding planning application for on-site substation and grid route
- Summer 2025 – Attended Athlone Agricultural Show to engage directly with residents and landowners
- February 2026 – Notice of preliminary works shared with nearby residents





# Community engagement

- March 2026 – Update regarding commencement of construction shared with c.200 local homes and businesses
- March 2026 – Extensive local media coverage of the start of construction
- March 2026 – dedicated Community Liaison Officer appointed for the project and contact details shared with residents
- Summer 2026 – Further information to be shared with residents regarding start of civil works for the substation and grid route

**EDF** power solutions  
**Taduff Solar Park**  
Community Update - March 2026

01

Dear local resident,  
We are writing to let you know that construction of Taduff Solar Park and associated works will commence later this month.  
The solar park and 110kV substation will be located in the townlands of Taduff, Taduff East, Drum, Curraghaleen, Creagh and Cuilglass, and a grid connection will connect the solar farm to the national grid at the Athlone 110kV substation.  
We are working closely with Roscommon County Council and our contractors Kirby Group and Belectric as this next phase of the project begins, with the aim of minimising disruption caused by the works and keeping you informed as the works progress.

**Project update**  
Initial enabling works, such as hedge trimming and tree lopping, began in February, with construction of the solar farm to begin later this month. Construction of the grid route will commence later in the year, and we will give further updates in advance of this.  
Once construction begins, there will be an increase in traffic and lorries in the area, particularly on the L-2025 and L-2026 roads, as the contractors begin early mobilisation works on the site to prepare for the installation of the PV solar panels and associated plant and materials.  
Once construction commences, our team may be operating on site between the hours of 8am and 6pm Monday-Friday, and 8am-1pm on Saturdays. Please be advised that there may be an increase in noise, traffic and dirt during this time, and we apologise in advance if you are inconvenienced in any way by this.  
Roads used during construction will be closely monitored and any potholes or similar issues will be repaired as a matter of course, and we will continue to keep the local community updated as construction progresses.  
The solar farm is expected to be constructed and operational in Spring 2028.

**Delivering low-carbon energy for Ireland**  
Under the Climate Action Plan 2025, the Irish Government has set a target to increase the share of renewables providing our electricity to 80% by 2030. Our aim is for the completed Taduff Solar Park to generate c.80MW of clean energy, powering c.20,000 homes across Ireland.\*

Scan the QR Code to learn more about the project

# Massive solar farm to begin construction

By James Fogarty

Construction work is to begin on a massive solar farm in South Roscommon in the coming weeks.

It is projected that the Taduff Solar Park could power up to 20,000 homes with renewable energy, and provide a Community Benefit Fund worth approximately €180,000 per annum.

In July 2020, the project, then

known as TDC Community Solar Park, received planning permission from Roscommon County Council for a development on an area of 70 hectares at Taduff West, Taduff East, Creagh and Curraghaleen, Athlone South, County Roscommon.

The development will see 19 single-storey inverter/transformer stations; a single-storey substation and access road; a single-storey customer substation, and a single-storey

spare parts container, as well as a boundary security fencing with access gates, CCTV security cameras, and landscaping works.

As part of the 20 planning conditions, a development contribution of €180,000 was to be paid to the council.

An Comisiún Pleanála has also granted planning permission for a new 110kV substation at the solar park and a grid connection to connect the project to the national grid at

Athlone.

A statement from EDF power solutions Ireland described the imminent works later this month as “a key milestone”.

The proposed solar farm is expected to be constructed and operational by spring 2028, at which point a Community Benefit Fund worth approximately €180,000 per annum will be established.

Paul Gallagher, head of onshore technologies at EDF power solutions Ireland, said

this was “a major milestone for a project that will help improve Ireland’s energy security and sovereignty, while also reducing carbon emissions and the country’s over reliance on fossil fuels”.

Mr Gallagher added that they were committed to working closely with local groups to ensure the benefits of the project are shared across the community. Initial details of the construction timeline have been shared with residents.

reNEWS.BIZ



## EDF starts Taduff solar park construction

Roscommon project includes €180,000 annual community fund

18 March 2026 Solar

[Image: EDF]



A map of the proposed solar farm area.

## Work set to start on major Drum solar farm project

A key milestone in the development of a South Roscommon solar farm will be reached later this month when work commences.

The Taduff Solar Park is to be developed by EDF power solutions Ireland on land in the Drum and Bealnamulla area.

Once completed, the circa 80MW solar farm, located approximately 6km southwest of Athlone, will have the capacity to power around 20,000 homes with secure, domestically produced renewable electricity and make a significant contribution to achieving Ireland’s 2030 climate targets.

Planning permission was granted in August 2020 for the scheme in townlands of Taduff, Drum and Curraghaleen. In late 2020, EDF power solutions Ireland acquired the project (previously known as TDC Community Solar Park), and it currently consists of a circa 80MW solar farm encompassing the additional townlands of Taduff East, Creagh and Cullglass, as well as a battery energy storage system.

An Comisiún Pleanála recently granted planning permission for a new 110kV substation at the solar park and a grid connection which will connect the project to the national grid at the Athlone 110kV substation.

The solar farm is expected to be constructed and operational by Spring 2028, at which point a Community Benefit Fund worth some €180,000 per annum will be established, from which allocations will be made annually for a period of 15 years to support community initiatives and activities.

Once constructed, the project will also make a significant contribution to the local economy through the payment of annual commercial rates to Roscommon County Council, the developers said,

in a statement.

EDF power solutions Ireland currently operates three solar farms in Wexford and Kilkenny. Paul Gallagher, Head of Onshore Technologies at EDF power solutions Ireland, said: “We’re delighted to be starting construction of Taduff Solar Park. This is a major milestone for a project that will help improve Ireland’s energy security and sovereignty, while also reducing carbon emissions and the country’s overreliance on fossil fuels.”

“Solar energy is an increasingly important part of Ireland’s energy mix, and EDF power solutions has led the way in Ireland, connecting some of the country’s first grid-scale solar farms back in 2023. Taduff Solar Park builds on this solar success story, and we’re committed to working closely with local groups and stakeholders to ensure the benefits of the project are shared across the community.”

EDF power solutions Ireland is working closely with Roscommon County Council, engineering contractors Kirby Group and Belectric, and local stakeholders to safely deliver the project and to minimise disruption during the construction phase.

Initial details of the construction timeline have been shared with residents, as well as contact details for the project’s Community Liaison Officer, and regular updates will continue to be provided.

Members of the public who would like to receive these updates as construction of the project progresses are encouraged to sign up for text and email alerts by emailing [taduffsolarpark@edf-power.com](mailto:taduffsolarpark@edf-power.com) or see <https://www.edf-powersolutions.ie/our-sites/taduff> for more information.

### Construction set to begin on south Roscommon solar farm

Mar 24, 2026 07:27

By SHANNONSIDE NEWS



The project is due to be operational by 2028.

A major solar farm is due to begin construction in South Roscommon in the coming weeks.

The project is due to be operational by 2028.

Six years after it was granted planning permission, construction will begin for a solar farm at Taduff West and East, Creagh and Curraghaleen in Co. Roscommon.



# Benefits for Roscommon

- Contribution of c.80MW towards the 262MW target in the Roscommon Renewable Energy Strategy
- A Community Benefit Fund worth c.€180,000 per annum – supporting positive local initiatives and activities
- A significant contribution in annual commercial rates to Roscommon County Council, adding to the c.€1.75m it currently receives from renewable energy projects
- A number of local businesses and contractors will be involved in the construction of the solar farm



*St Mary's Community Centre, Tagoat Co. Wexford*



# Next steps

- April 2026 – Planning amendment application to be submitted for 2ha field within RLB
- April 2026 – Commence construction of site entrance, site infrastructure and internal access track
- Summer 2026 – Delivery and installation of solar PV modules
- Summer 2026 – Further information to be shared with local residents ahead of the commencement of grid route works
- Summer 2026 – 110kV cable route work (civil) to commence
- Spring 2027 – 110kV cable route work (electrical) to commence
- Autumn 2027 – cold commissioning and then hot commissioning of solar PV modules
- September 2027 – EirGrid to connect Taduff Solar Park to the



*Blusheens Solar Farm, Co. Wexford*



Thank  
you

